

### Mayer • Cross Check

Gr A



**Aquamarine** (F299-023)



**Basalt** (F299-016)



**Blue Ribbon** (F299-024)



**Concord** (F299-034)



**Cranberry** (F299-001)



**Demerera** (F299-019)



**Dove** (F299-036)



**Earth** (F299-010)



**Imperial** (F299-014)



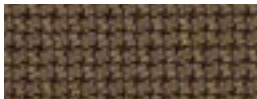
**Lime** (F299-003)



**Marine** (F299-054)



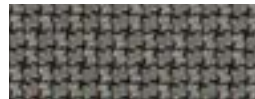
**Midnight** (F299-004)



**Otter** (F299-000)



**Paradise** (F299-009)



**Platinum** (F299-026)



**Red Baron** (F299-021)



**Saddle Tan** (F299-007)



**Slate Black** (F299-006)



**Vermillion** (F299-011)



**Wisteria** (F299-005)

The colors on this card are digital representations. Please refer to an actual sample before finalizing your selection.

# NeutralPosture

## Specifications

---

### Content

100% polyester

### Repeat

Non-Matching

### Width

54 in.

### Weight

10.94 oz.

### Cutting Direction

NR - Non-railroaded

### Cleaning Code

S: Solvent Cleaner - Spot clean, using a mild water-free solvent or dry cleaning product. Clean only in a well-ventilated room and avoid any product containing carbon tetrachloride or other toxic materials. Pretest a small area before proceeding. Always rinse promptly with clean water.

## Performance

---

- Greenguard Certification : Gold
- Colorfastness Wet : 4
- Colorfastness Dry : 4
- Passes Call 117 Section E
- NFPA 260/UFAC Class 1
- ASTM E84 Class 2/B;
- ASTM E84 Class 2 or B
- Tensile Strength Weft : 172
- Tensile Strength Warp : 201
- Seam Slippage Weft : 66 lbs
- Seam Slippage Warp : 62 lbs
- UL Recognized

The colors on this card are digital representations. Please refer to an actual sample before finalizing your selection.